



Pressure Gauges

Bourdon Tube Pressure Gauges

Brass, stainless steel
Model: MAN-R, -Q



Measuring range:
-30" ... 0" Hg through 0 ... 14,500 PSIG
Housing: Ø 63, 100, 160 mm
Overload protection: 1.15-1.3 times
Connection: ¼", ½" NPT
Accuracy: ± 1.0 or ± 1.6 % of full scale

All Stainless Steel Bourdon Tube Pressure Gauges

Stainless steel
Model: MAN-R



Measuring range:
-30" ... 0" Hg through 0 ... 14,500 PSIG
Housing: Ø 63, 100, 160 mm
Overload protection: 1.15-1.3 times
Connection: ¼", ½" NPT
Accuracy: ± 1.0 or ± 1.6 % of full scale

Bourdon Tube Pressure Gauges with Switches

Brass, stainless steel
Model: MAN-RF, -RG



Measuring range:
-30" ... 0" Hg through 0 ... 23,000 PSIG
Housing: Ø 100, 160 mm
Overload protection: 1.15-1.3 times
Connection: ½" NPT
Accuracy: ± 1.0 of full scale

Capsule Element Pressure Gauges

Brass, stainless steel
Model: MAN-K



Measuring range:
-30" ... 0" Hg through 0 ... 8.7 PSIG
Housing: Ø 63, 80, 100, 160 mm
Overload protection: 0.9-1.0 times
Connection: ¼", ½" NPT
Accuracy: ± 1.6 % of full scale

Diaphragm Pressure Gauges

Stainless steel
Model: MAN-P



Measuring range:
-7.5" ... 0" Hg through 0 ... 580 PSIG
Housing: Ø 100, 160 mm
Overload protection: 1.15-1.3 times
Connection: ½" NPT, ¾"-3" ANSI
Accuracy: ± 1.6 % of full scale

Pressure Gauge with Transducer

Stainless steel
Model: MAN-ZF



Measuring range:
-30" ... 0" Hg through 0 ... 8,700 PSIG
Housing: Ø 100
Overload protection: 0.9-1.0 times
Connection: ½" NPT
2-wire 4-20 mA output
Accuracy: ± 1.0 of full scale

Test Pressure Gauge with Bourdon Tube

Aluminum
Model: MAN-F



Measuring range:
-8.5" ... 0" Hg ... 0 ... 36,000 PSIG
Housing: Ø 160, 250 mm
Overload protection: 1,0 times
Connection: ½" NPT
Accuracy: ± 0.25 or ± 0.6 % of full scale

LCD Pressure Gauge with Ceramic Sensing Element Battery Powered

Stainless steel/PA glass fibre reinforced
Model: MAN-SD, DSD



Measuring range:
-30" ... 0" Hg through 0 ... 23,000 PSIG
Housing: Ø 80 mm
Overload protection: 1.3-3 times
Connection: ¼", ½" NPT
Accuracy: ± 0.5 of full scale

LCD Pressure Gauge with Ceramic Sensing Element Externally Powered

Stainless steel/PA glass fibre reinforced
Model: MAN-LD



Measuring range:
-30" ... 0" Hg through 0 ... 23,000 PSIG
Housing: Ø 80 mm
Overload protection: 1.3-3 times
Connection: ¼", ½" NPT
Accuracy: ± 0.5 of full scale

LCD Pressure Gauge with Ceramic or Thin Film Sensing Element - Battery Powered

Stainless steel
Model: PDC



Measuring range:
0 ... 30 PSIG to 0 ... 10,000 PSIG
Housing: Ø 80 mm
Overload protection:
2 times or 14,500 PSIG max.
Connection: ¼" NPT
Accuracy: ± 0.5 % of full scale ... ±1 Digit

LED Pressure Gauge with Ceramic Sensing Element

Stainless steel/PA glass fibre reinforced
Model: MAN-SF26, DSF26



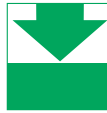
Measuring range:
-30" ... 0" Hg through 0 ... 23,000 PSIG
Housing: Ø 100 mm
Overload protection: 2 times
Connection: ¼", ½" NPT
4-20 mA and relay contacts
Accuracy: ± 0.5 of full scale

LED Differential Pressure Gauge with Ceramic Sensing Element

Stainless steel/
PA glass fibre reinforced
Model: MAN-BF20



Measuring range:
-30" ... 0" Hg through 0 ... 23,000 PSID
Housing: Ø 100 mm
Overload protection: 2 times
Connection: ½" NPT
4-20 mA and relay contacts
Accuracy: ± 0.5 of full scale



Pressure Measurement

LED Differential Pressure Gauge with Ceramic Sensing Element
Stainless steel/
PA glass fibre reinforced
Model: MAN-BF26



Measuring range:
-30" ... 0" Hg through 0 ... 23,000 PSID
Housing: Ø 100
Overload protection: 2 times
Connection: ¼", ½" NPT
4-20 mA and relay contacts
Accuracy: ± 0.5 % of full scale

Differential Pressure Gauge with Diaphragm
Aluminum
Model: MAN-Dx2A



Measuring range:
0 ... 0.4 PSID to 0 ... 360 PSID
Housing: Ø 100, 160 mm
Connection: ¼" BSP (NPT with adapter)
Accuracy: ± 1.6 % of full scale

Differential Pressure Gauge with Diaphragm
Stainless steel
Model: MAN-Dxx5



Measuring range:
0 ... 0.4 PSID to 0 ... 360 PSID
Housing: Ø 100, 160 mm
Connection: ¼" BSP (NPT with adapter)
Accuracy: ± 1.6 % of full scale

Differential Pressure Gauge with Diaphragm
Stainless steel
Model: MAN-DF2G, -DG2G



Measuring range:
0 ... 0.9 PSID to 0 ... 580 PSID
Housing: Ø 100, 160 mm
Connection: ½" BSP (NPT with adapter)
Accuracy: ± 1.6 % of full scale

Diaphragm, Capsule, and Inline Diaphragm Seals for Pressure Gauges and Transmitters
Stainless steel, special materials on request
Model: DRM



Measuring range:
-30" ... 0" Hg through 0 ... 23,000 PSIG
Fill liquids: glycerine, paraffin- and silicone
Connection: NPT, BSP, ANSI, Tri-Clamp® or other sanitary connections
Accuracy: ± 1.6 % of full scale

All Stainless Steel Bourdon Tube Pressure Gauge with Membrane Diaphragm
Stainless steel
Model: MAN-RD...DRM-600



Measuring range:
0 ... 85 PSIG to 0 ... 14,500 PSIG
Housing: Ø 63 mm
Connection: ½" to 1¼" NPT
Accuracy: ± 1.6 % of full scale

Contact Pressure Gauge with Membrane Diaphragm Seal
Stainless steel
Model: MAN-RF...M...DRM-601



Measuring range:
0 ... 85 PSIG to 0 ... 14,500 PSIG
Housing: Ø 100 mm
Connection: ½" to 1¼" NPT
Accuracy: ± 1.6 % of full scale

Pressure Gauge with Sanitary Diaphragm Seal and Cooling Element
Stainless steel
Model: MAN-RF...MZB-711...DRM-602



Measuring range:
0 ... 15 PSIG through 0 ... 580 PSIG
Housing: Ø 100 mm
Connection: Tri-Clamp®, DIN 11851, hygienic connection, IDF, SMS
Accuracy: ± 1.6 % of full scale

All Stainless Steel Pressure Gauge with Membrane Diaphragm
Stainless steel
Model: MAN-RF...M1...DRM-628



Measuring range:
0 ... 15 PSIG through 0 ... 580 PSIG
Housing: Ø 100, 160 mm
Connection: 1" to 4" ANSI
Accuracy: ± 1.6 % of full scale

All Stainless Steel Pressure Gauge with Membrane Diaphragm
Stainless steel
Model: MAN-RF...M1...DRM-620



Measuring range:
0 ... 1.45 PSIG through 0 ... 8,700 PSIG
Housing: Ø 100, 160 mm
Connection: ¾" NPT
Accuracy: ± 1.6 % of full scale

All Stainless Steel Pressure Gauge with In-Line Diaphragm
Stainless steel
Model: MAN-RF...DRM-502



Measuring range:
0 ... 15 PSIG through 0 ... 580 PSIG
Housing: Ø 100, 160 mm
Connection: ½"...2" Tri-Clamp®, ISO hygienic connection
Accuracy: ± 1.6 % of full scale

Differential Pressure Gauge with Bourdon Tube
Aluminum, steel
Model: MAN-DG12R



Measuring range:
0 ... 15 PSID through 0 ... 870 PSID
Housing: Ø 160 mm
Connection: ½" NPT
Accuracy: ± 1.6 % of full scale



Pressure Measurement

Pressure Gauge with Sanitary Diaphragm Seal per DIN 11851

Stainless steel
Model: MAN-RF...DRM-603



Measuring range:
0 ... 15 PSIG through 0 ... 580 PSIG
Housing: Ø 100, 160 mm
Connection: sanitary
Accuracy: ± 1.6 % of full scale

Pressure Gauge with Tri-Clamp® Diaphragm Seal

Stainless steel
Model: MAN-RF...DRM-613



Measuring range:
0 ... 15 PSIG through 0 ... 145 PSIG
Housing: Ø 100 mm
Connection: 1"...3" Tri-Clamp®
Accuracy: ± 1.6 % of full scale

Pressure Gauges with Diaphragm for PCB Manufacture

PPH
Model: MAN...



Measuring range:
0 ... +1 bar to 0 ... +25 bar
Connection: ¼" BSP
Accuracy: ± 1.6 % of full scale

LCD Pressure Gauge with Diaphragm Seal for Homogenizing Machines

Stainless steel
Model: MAN-SD...DRM-189



Measuring range:
0 ... 1,450 PSIG through 0 ... 14,500 PSIG
Housing: Ø 80 mm
Connection: homogenizer flange
Accuracy: ± 1.6 % of full scale

Pressure Gauge with Membrane Diaphragm Seal - Plastic

PVDF
Model: MAN-RD...DRM-632



Measuring range:
0 ... 20 PSIG through 0 ... 230 PSIG
Housing: Ø 63 mm
Connection: ½" NPT
Accuracy: ± 1.6 % of full scale

LED Pressure Gauge with Diaphragm Seals for Homogenizing Machines

Stainless steel
Model: MAN-SF...DRM-189



Measuring range:
0 ... 1,450 PSIG through 0 ... 14,500 PSIG
Housing: Ø 100 mm
Membrane: flush mounted
Display: 4-digit, green LED display
t_{max} 210 °F
Connection: fHomogenizer flange
Accuracy: ± 1.0 % of full scale

Digital Pressure Gauge with Membrane Diaphragm Seal

PVC
Model: MAN-SD...DRM-630



Measuring range:
0 ... 20 PSIG through 0 ... 145 PSIG
Housing: Ø 74 mm
Connection: ½" NPT
Accuracy: ± 1.0 % of full scale

Pressure Sensor with Membrane Diaphragm Seal

Polypropylene
Model: SEN...DRM-631



Measuring range:
0 ... 20 PSIG through 0 ... 145 PSIG
Connection: ½" NPT
Accuracy: ± 1.0 % of full scale

Differential Pressure Sensor and Controller for Filters

Model: PMP



Measuring range: 0 ... 20" H₂O
Power supply: 24 V_{AC/DC}, 110 V_{AC}, 230 V_{AC}
Display: 4-digit LED
Connection: ¼" tube
Accuracy: ± 1.6 % of full scale

Differential Pressure Transmitter

Stainless steel, Monel, tantalum, Hastelloy
Model: PAD

High Quality - Low Cost



Measuring range:
0 ... 0.01 PSIG to 0 ... 6,000 PSIG
Power supply: 18-45 V_{DC}
Connection: ¼", ½" NPT
Accuracy: ± 0.075% of full scale

Wet-Wet Differential Pressure Transmitter

Stainless steel
Model: KPD



Measuring range:
0 ... 100 PSIG through 0 ... 1,000 PSIG
Power supply: 10-30 V_{DC}
Connection: ¼" NPT
Accuracy: ± 3 % BFSL

Pressure Transmitter with Ceramic Sensing Element

Stainless steel
Model: PDA



Measuring range:
-30 ... 0" Hg through 0 ... 5,800 PSIG
Display: 3-digit LED
Power supply: 24 V_{DC}
Connection: ¼", ½" NPT
Accuracy: ± 0.5 – 1 % of full scale





Pressure Measurement/ Monitoring

Pressure Transmitter with Ceramic Sensing Element
Stainless Steel
Model: PDD



Measuring range:
-30" ... 0" Hg through 0 ... 5,800 PSIG
Display: 3-digit LED
Power supply: 24 V_{DC}
Connection: ¼", ½" NPT
Accuracy: ± 0.5 – 1 % of full scale

Pressure Transmitter High Accuracy
Stainless Steel, Hastelloy-C, tantalum
Model: PAS



Measuring range:
-30" ... 0" Hg through 0 ... 5,800 PSIG
Power supply: 11,9-45 V_{DC}
Connection: ¼", ½" NPT
Accuracy: ± 0.075% of full scale

Electronic Pressure Switch Thin Film/Ceramic Sensor
Stainless Steel
Model: PSC



Measuring range: -30" ... +30" PSIG
through 0 ... 10,000 PSIG
Display: 4-digit LED
Power supply: 12-30 V_{DC}
Connection: ¼", ½" NPT
Accuracy: ± 1 % of full scale ... ±1 Digit

Pressure Transmitter with Ceramic Element and Add-On Display AUF
Stainless Steel
Model: SEN-86 with AUF



Measuring range:
-30" ... 0" Hg through 0 ... 8,700 PSIG
Display: 4-digit LED
Overload protection: 1,5-2 times
Connection: ½" NPT
Accuracy: ± 0.5 – 1 % of full scale

Pressure Transmitter with Ceramic Element and Add-On Display AUF
Stainless Steel
Model: SEN-87 with AUF



Measuring range:
-30" ... 0" Hg through 0 ... 8,700 PSIG
Display: 4-digit LED
Overload protection: 1,5-2 times
Connection: ¼" NPT
Accuracy: ± 0.5 – 1 % of full scale

Pressure Transmitter with Thin Film Sensing Element
Stainless Steel
Model: KPG



Measuring range:
-30" ... 0" Hg through 0 ... 60,000 PSIG
Overload protection: 1,5-2 times
Connection: ¼", ½" NPT, 9/16 SAE
Accuracy: ± 0.1 – 0.25 % of full scale

Pressure Transmitter with Thin Film Sensing Element
Stainless Steel
Model: KPK



Measuring range:
-30" ... 0" Hg through 0 ... 15,000 PSIG
Overload protection: 1,5-2 times
Connection: ¼" NPT
Accuracy: ± 0.25 – 0.5 % of full scale

OEM Pressure Transmitter with Heat-Fused Sensing Element
Stainless Steel
Model: KPA



Measuring range:
0 ... 50 PSIG to 0 ... 10,000 PSIG
Overload protection: 2 times
Connection: ¼" NPT
Accuracy: ± 0.25 % of full scale

Pressure Transmitter with Flush Diaphragm
Stainless Steel
Model: SEN-3251, -3252



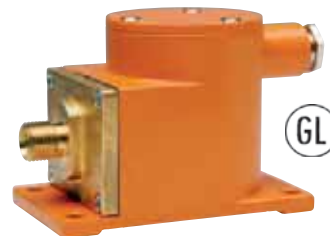
Measuring range:
-30 ... 0" Hg through 0 ... 360 PSIG
Membrane: flush mounted
Overload protection: 2-3,5 times
Connection:
½", 1" BSP with weld-on adapter
Accuracy: ± 0,25 – 0,5 % of full scale

Explosion Proof Pressure Transmitter CSA/US Approved
Stainless Steel
Model: KP46



Measuring range:
0 ... 50 PSIG through 0 ... 10,000 PSIG
Overload protection: 2 times
Connection: ¼" NPT
Accuracy: ± 0,25 % BFSL

Pressure Transmitter for High Vibration
Brass
Model: PNK



Measuring range:
-30 ... 0" Hg through 0 ... 1,450 PSIG
Overload protection: 1,6 times
Connection: M16x1,5 (NPT with adapter)
Accuracy: ± 1 % of full scale

Add-On Loop Powered Display for Transmitters
Model: AUF



For Transmitters with DIN 43650 Plugs
Loop Powered 4-20 mA
Menu Programmable
Optional Transistor Switch



Pressure Measurement/ Monitoring

Hand-Held Pressure Indicator for External Sensors
Model: HND-P105



Measuring range:
-14.5 ... +40 PSIG through 0 ... 5,800 PSIG
(dependent on associated sensor)
Accuracy: $\pm 0,1$ % of full scale

Hand-Held Pressure Indicator for External Sensors
Model: HND-P210, -215



Measuring range:
-14,5 ... +40 PSIG through 0 ... 5,800 PSIG
(dependent on associated sensor)
Optional datalog, alarm, control functions
Accuracy: $\pm 0,1$ % of full scale

Hand-Held Differential Pressure Indicator with 2 Integrated Sensors
Model: HND-P121, -123, 126



Measuring range: -0.0145 ... 0.36 PSID
to -1.45 ... 29 PSID
Optional datalog, alarm, control functions
Accuracy: $\pm 0,2 - 0,4$ % of full scale

Hand-Held Differential Pressure Indicator with 1 Integrated Sensor
Model: HND-P129, -239



Measuring range: 0 ... 15 PSIG
Optional datalog, alarm, control functions
Accuracy: 0,2 % of full scale

Pressure Switch - Heavy Duty Bellows Type
Brass
Model: KRT



Switching range:
-14,5 ... 0 PSIG through 135 ... 435 PSIG
Overpressure: 1.5-5 times
Repeatability: $\pm 0,25$ % of full scale

Pressure Switch - Heavy Duty Bellows Type
Brass
Model: KPS/KAS



Switching range:
0 ... 35 PSIG to 87 ... 870 PSIG
Overpressure: 5-10 times
Connection: 1/4" NPT
Repeatability: $\pm 0,25$ % of full scale

Pressure Switch - Industrial Diaphragm/Piston Type
Aluminum
Model: KPH



Switching range:
-14,5 ... 0 PSIG through 580 ... 6,100 PSIG
Overpressure: 1.4-5 times
Connection: 1/4" NPT
Repeatability: ± 3 % of full scale

Pressure Switch - OEM Diaphragm Type
Zinc plated steel
Model: KPH300



Switching range:
3 ... 30 PSIG through 450 ... 4,600 PSIG
Overpressure: 1.2-9 times
Connection: 1/4" NPT
Repeatability: ± 4 % of setpoint

Pressure Switch - OEM Diaphragm Type
Zinc plated steel, brass, stainless steel
Model: KPF



Switching range:
3 ... 15 PSIG through 750 ... 1,450 PSIG
Overpressure: 1,450 PSIG
Connection: 1", 1/2" NPT
Repeatability: ± 5 % of full scale

Pressure Switch with Hall Sensor
Brass/plastic
Model: PDL-0



Switching range:
-13 ... -0.75 bar to 35 ... 360 PSIG
Switching function: 2-4 times
Connection: 1/4" NPT
Repeatability: ± 1 % of full scale

Pressure Switch with Hall Sensor
Brass/plastic
Model: PDL-1



Switching range:
87 ... 870 PSIG ... 870 ... 8,700 PSIG
Switching function: 2-4 times
Connection: 1/4" NPT
Repeatability: ± 1 % of full scale

Pressure Gauges Accessories
Brass, steel, stainless steel
Model: MZN



Block and bleed valves, gauge swivels, snubbers, steam siphons

